

# NumaView™ Remote Software User Guide

© 2017-2019 Teledyne API. All rights reserved.

**Please read the applicable user manual prior to operating the instrument.**

## INTRODUCTION

Teledyne API's NumaView™ Remote software enables remote operation and data capture of your Teledyne API instrument through a TCP/IP connection with your computer. This guide provides instructions for acquiring the interface software and setting it up to remotely operate one or more instruments from one or more computers. This requires the following:

- instrument connected via TCP/IP to computer on private network or the Internet
- instrument's IP address
- NumaView™ Remote software

Alternatively, or in addition, you may wish to view the process demonstrated in video format:

<https://youtu.be/RGX6Wxmohjs>.

## ACCESSING THE NUMAVIEW™ REMOTE SOFTWARE

From your computer use a browser to navigate to the Teledyne API website (<http://www.teledyne-api.com>), find the Software Downloads page, and click NumaView™ Remote Software to download the application. For assistance, contact Technical Support. Open the downloaded NumaView Remote.zip file (either from the bottom of your Internet screen or from your default Downloads folder) and start the setup.exe file to upload the application onto your computer.

The next section in this guide provides instructions for setting up and launching an instrument. When the application is operational and instrument(s) set up, it is important to run a check for and upload the latest firmware updates for each model, the procedure for which is described later in this guide.

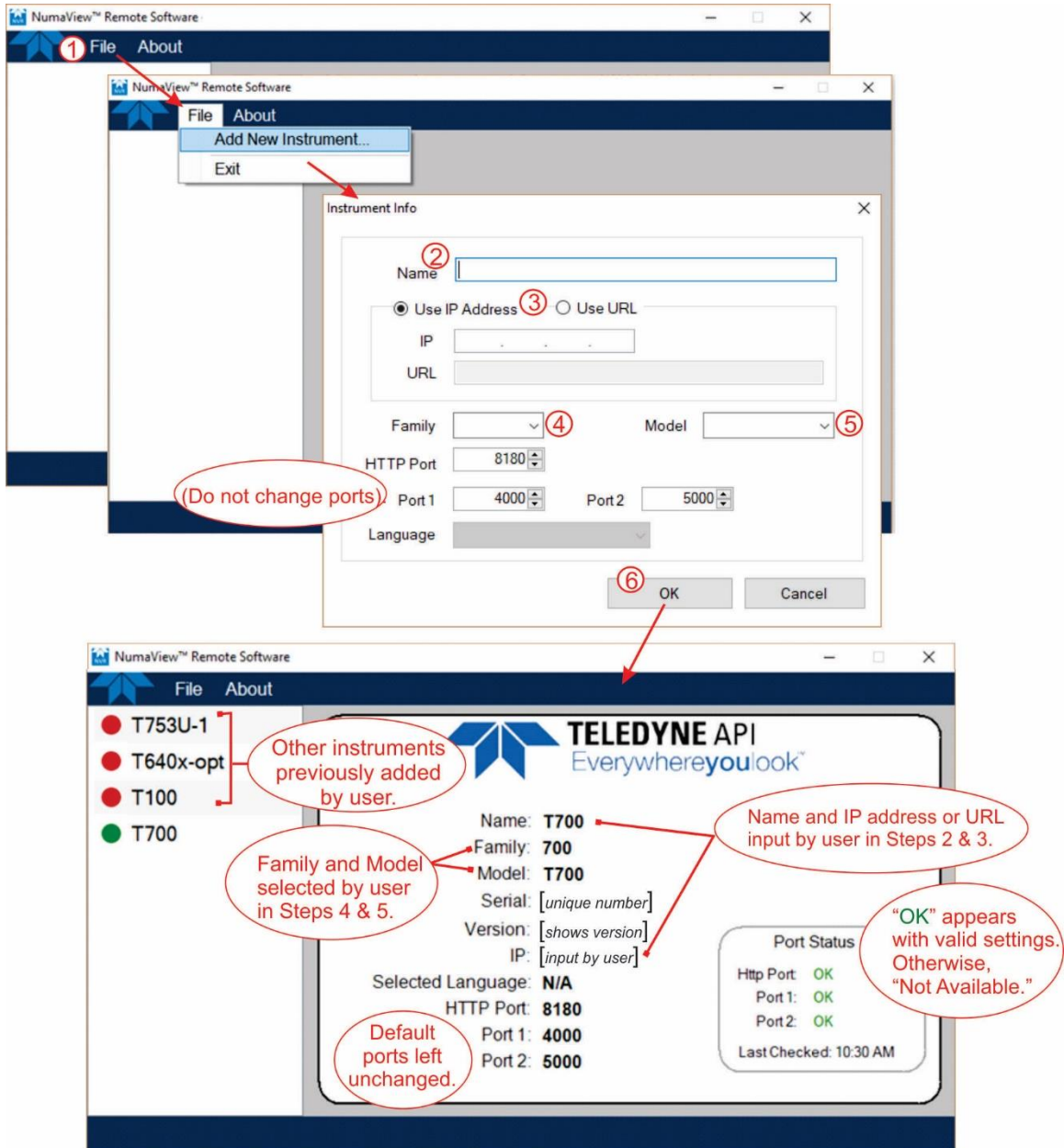
## SETTING UP AN INSTRUMENT FOR REMOTE OPERATION

After fulfilling the requirements listed in the Introduction and downloading the software, start the executable to bring up the interface. (Once an instrument is set up in the NumaView™ Remote software interface, it will remain visible for future use until deleted). Refer to Figure 1.

1. Click File>Add New Instrument.
2. In the Instrument Info window click the Name field and input a name for the instrument (when more than one of the same model will be operated remotely, each must be given a unique name).
3. Click the radio button for either the IP Address or the URL, and input the appropriate information into the respective field.
4. In the Family dropdown, select the TAPI family number of the instrument to be remotely operated. (This action populates the dropdown menu in the Model field).
5. In the Model dropdown, select the specific instrument model within the family.
6. Click OK.

# NumaView™ Remote Software User Guide

© 2017-2019 Teledyne API. All rights reserved.



**Figure 1. Setting Up Instrument for Remote Operation**

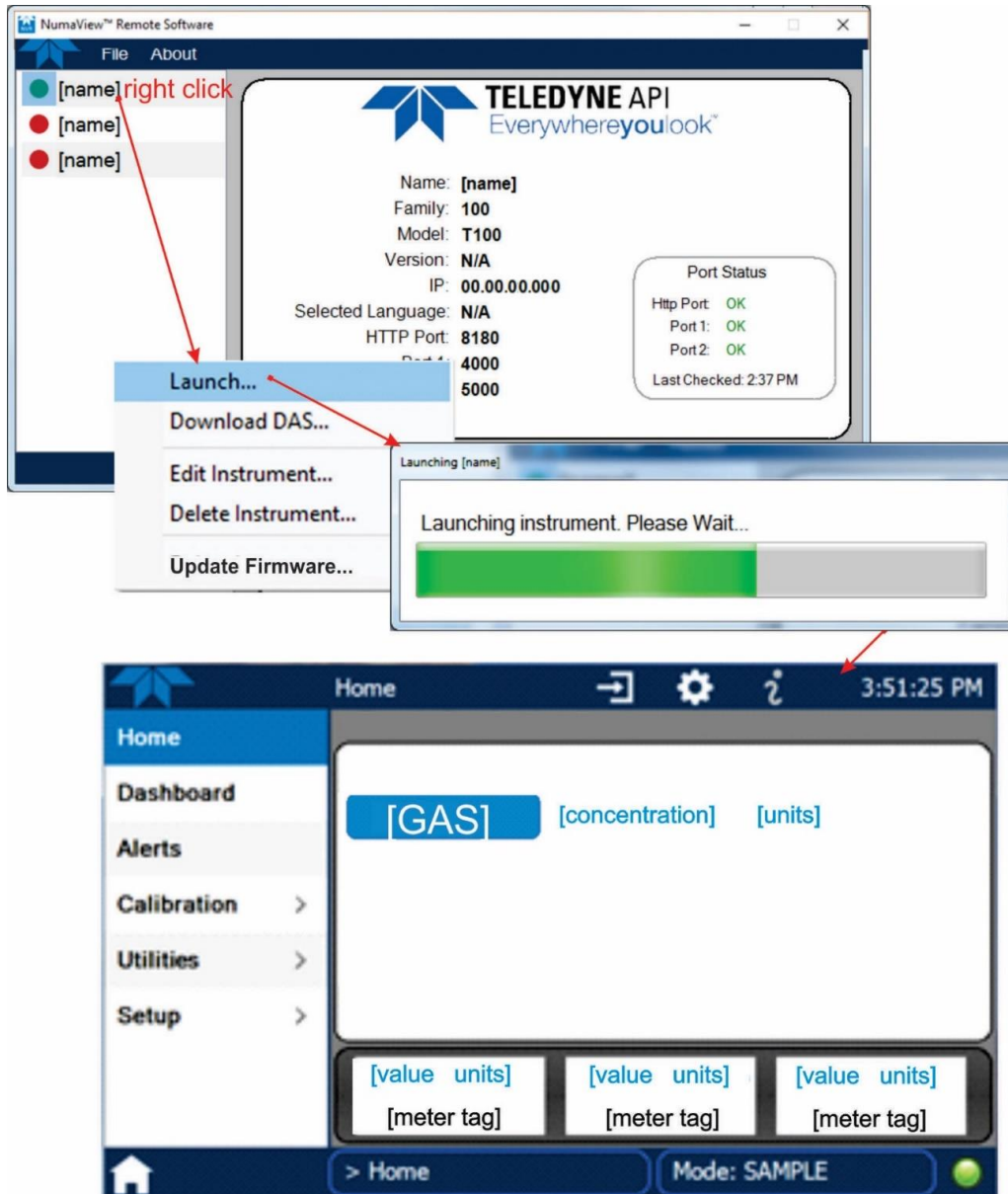
Once the instrument has been added, it can be launched for remote operation (next).

# NumaView™ Remote Software User Guide

© 2017-2019 Teledyne API. All rights reserved.

## STARTING REMOTE OPERATION

Among the instruments listed in the left portion of the window, highlight and right click the instrument to be operated, and click Launch (Figure 2) to bring up the operation interface.



**Figure 2. Launching Instrument for Remote Operation**

Use a computer mouse to “touch” the virtual NumaView™ software interface for setting up and operating the instrument according to its respective user manual. Use the instrument’s internal data acquisition system (DAS) to collect and analyze data by configuring Datalogs through the Setup>Data Logging menu.

# NumaView™ Remote Software User Guide

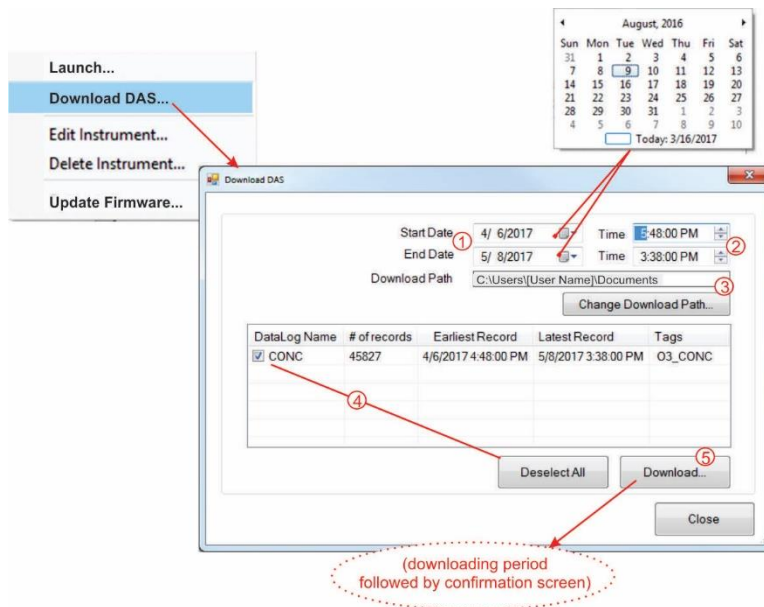
© 2017-2019 Teledyne API. All rights reserved.

## DOWNLOADING DATALOGS

To remotely download to your computer the datalog captured by the instrument's DAS, right click the instrument name in the NumaView™ Remote software interface and click Download DAS (Figure 3).

1. Provide a period range by selecting a day, month and year from the dropdown calendar in the Start Date and End Date fields (or click within each division (month/day/year) and type the values).
2. Provide a beginning time for the Start Date and an ending time for the End Date by clicking within each division (hour, minutes, and seconds and AM or PM) of the corresponding Time field and either type the numeric value or click the increment/decrement buttons.
3. If the default Download Path needs to be modified, click the Change Download Path button and select a different folder. Otherwise, go to the next step.
4. All datalogs are selected by default (checkmark appears in box next to the DataLog Name). Either deselect unwanted logs or click the Deselect All button and select individual Datalog(s) intended for download.
5. Click the Download button.

When download is complete, the Success window will display confirmation message showing the location of the downloaded files.



**Figure 3. Downloading a DataLog**

# NumaView™ Remote Software User Guide

© 2017-2019 Teledyne API. All rights reserved.

## UPDATING SOFTWARE/FIRMWARE

When your Teledyne API instrument is connected to a network that is connected to the Internet, you may use the Setup>Instrument>Remote Update menu to check for updates and to download directly from the website to the instrument. However, if your instrument is connected to a network that is not connected to the Internet, there are different steps to follow as described in this section. This process requires the following:

- computer or other communication device connected to the Internet
  - thumb drive or USB cable to transfer the downloaded updates
  - NumaView™ Remote (NVR) software application with target instrument launched
1. In the target instrument’s NVR interface navigate to the Setup>Instrument>Product Info menu and note the Model name and the three-packet Package Version number with “build” number.
  2. Navigate to the Setup>Instrument>System Info menu and note the four-packet Windows Version number.
  3. In your computer’s Internet interface navigate to the Teledyne API website (<http://www.teledyne-api.com>), find the Software Downloads page, and click NumaView™ Software Upgrade Tool.
  4. Edit the three fields (Model, Windows Version, Package Version) to match those values noted in Steps 1 and 2 above, using the “build” number as the fourth packet number for the Package Version., and press the Check button.
  5. The response that you see next will restate the Model name and will show whether “Upgrade Needed.” If “No” or “N/A” appears, exit from the Internet and move forward with operating the instrument via the remote interface.
  6. If “Yes” appears, “Download Link” also appears; click “Download Link.”
  7. Once the download is completed, transfer the update file to the computer that is remotely controlling the instrument. (This is typically performed with a portable thumb drive).
  8. Right click the instrument name in the NumaView™ Remote software interface and click “Update Firmware...” (Figure 4).

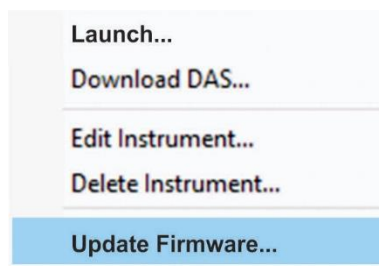


Figure 4. Instrument Menu for Firmware Update



# NumaView™ Remote Software User Guide

© 2017-2019 Teledyne API. All rights reserved.

- The “Update Firmware on [model name]” window appears, showing instrument information and a Firmware File field (Figure 5). Click the Select... button, navigate to the location of the update file, and click the file name.

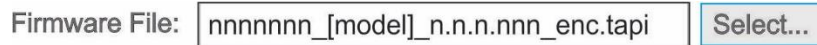


Figure 5. Firmware File Selection Field

- Click the “Start Firmware Update” button (Figure 6).



Figure 6. Firmware Update Start Button

A status bar appears with information showing where the update is in the installation process, with another button below to cancel the update if needed.

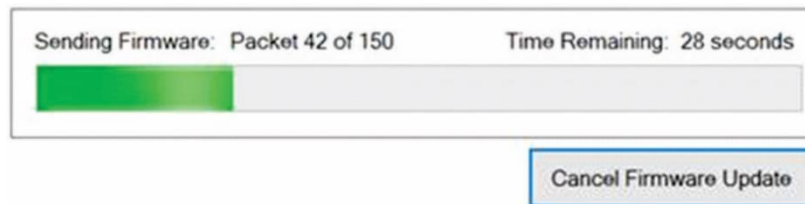


Figure 7. Firmware Update Status Bar and Cancel Button

- In the Firmware Installation in Progress window that appears next in this update process, follow the instructions provided for closing the firmware update dialog and all launched instances of the instrument being operated in NumaView™ Remote. Relaunch is possible after the firmware update is complete.